



Including all sports pitches in use.

Predicted dayTime LAeq, T sound pressure levels.

Receptor Height 1.5m above ground level.

- + Point Source
- Line Source
- ▨ Area Source
- vert. Area Source
- Road
- Building
- Cylinder
- Barrier
- 3D-Reflector
- Embankment
- ⊗ Receiver
- Calculation Area

- 35 dB
- 40 dB
- 45 dB
- 50 dB
- 55 dB
- 60 dB
- 65 dB
- 70 dB
- 75 dB
- 80 dB
- 85 dB
- 90 dB



Elmwood House T +44(0) 28 90 667914  
74 Boucher Road F +44(0) 28 90 668286  
Belfast W www.rpsgroup.com/ireland  
BT12 6RZ E ireland@rpsgroup.com

A TETRA TECH COMPANY

**Client:** Hamilton Architects

**Project:** Letterkenny Sports Hub

**Title:** Daytime Sports Pitch Noise  
Normal Operation

**Figure No.** Figure 9.9

Project No.	Date	Revision
NI2553	June 2023	V01





**Legend**

- Proposed Acoustic Barrier
- Site Boundary

**rps** A TETRA TECH COMPANY  
Elmwood House T +44(0) 28 90 667914  
74 Boucher Road F +44(0) 28 90 668286  
Belfast W www.rpsgroup.com/ireland  
BT12 6RZ E ireland@rpsgroup.com

**Client:** Hamilton Architects

**Project:** Letterkenny Sports Hub

**Title:** Proposed Acoustic Barrier

Figure No.		
Project No.	Date	Revision
NI2553	02/06/2023	





**Legend**

- Site Boundary
- 300m Buffer
- Noise Sensitive Receptor

**rps** Elmwood House T +44(0) 28 90 667914  
74 Boucher Road F +44(0) 28 90 668286  
Belfast W www.rpsgroup.com/ireland  
BT12 6RZ E ireland@rpsgroup.com

**Client:** Hamilton Architects

**Project:** Letterkenny Sports Hub

**Title:** Noise Sensitive Receptors (Extent A)

Figure No.		
Project No.	Date	Revision
NI2553	04/04/2023	





## Legend

- Site Boundary
- 300m Buffer
- Noise Sensitive Receptor

**rps** Elmwood House T +44(0) 28 90 667914  
74 Boucher Road F +44(0) 28 90 668286  
Belfast W www.rpsgroup.com/ireland  
BT12 6RZ E ireland@rpsgroup.com  
A TETRA TECH COMPANY

**Client:** Hamilton Architects

**Project:** Letterkenny Sports Hub

**Title:** Noise Sensitive Receptors (Extent B)

**Figure No.**

Project No.	Date	Revision
NI2553	04/04/2023	





**Legend**

- Site Boundary
- 300m Buffer
- Noise Sensitive Receptor

**rps** Elmwood House T +44(0) 28 90 667914  
74 Boucher Road F +44(0) 28 90 668286  
Belfast W www.rpsgroup.com/ireland  
BT12 6RZ E ireland@rpsgroup.com

**Client:** Hamilton Architects

**Project:** Letterkenny Sports Hub

**Title:** Noise Sensitive Receptors (Extent C)

**Figure No.**

Project No.	Date	Revision
NI2553	04/04/2023	





## Legend

- Site Boundary
- 300m Buffer
- Noise Sensitive Receptor

**rps** Elmwood House T +44(0) 28 90 667914  
74 Boucher Road F +44(0) 28 90 668286  
A TETRA TECH COMPANY Belfast W www.rpsgroup.com/ireland  
BT12 6RZ E ireland@rpsgroup.com

Client: Hamilton Architects

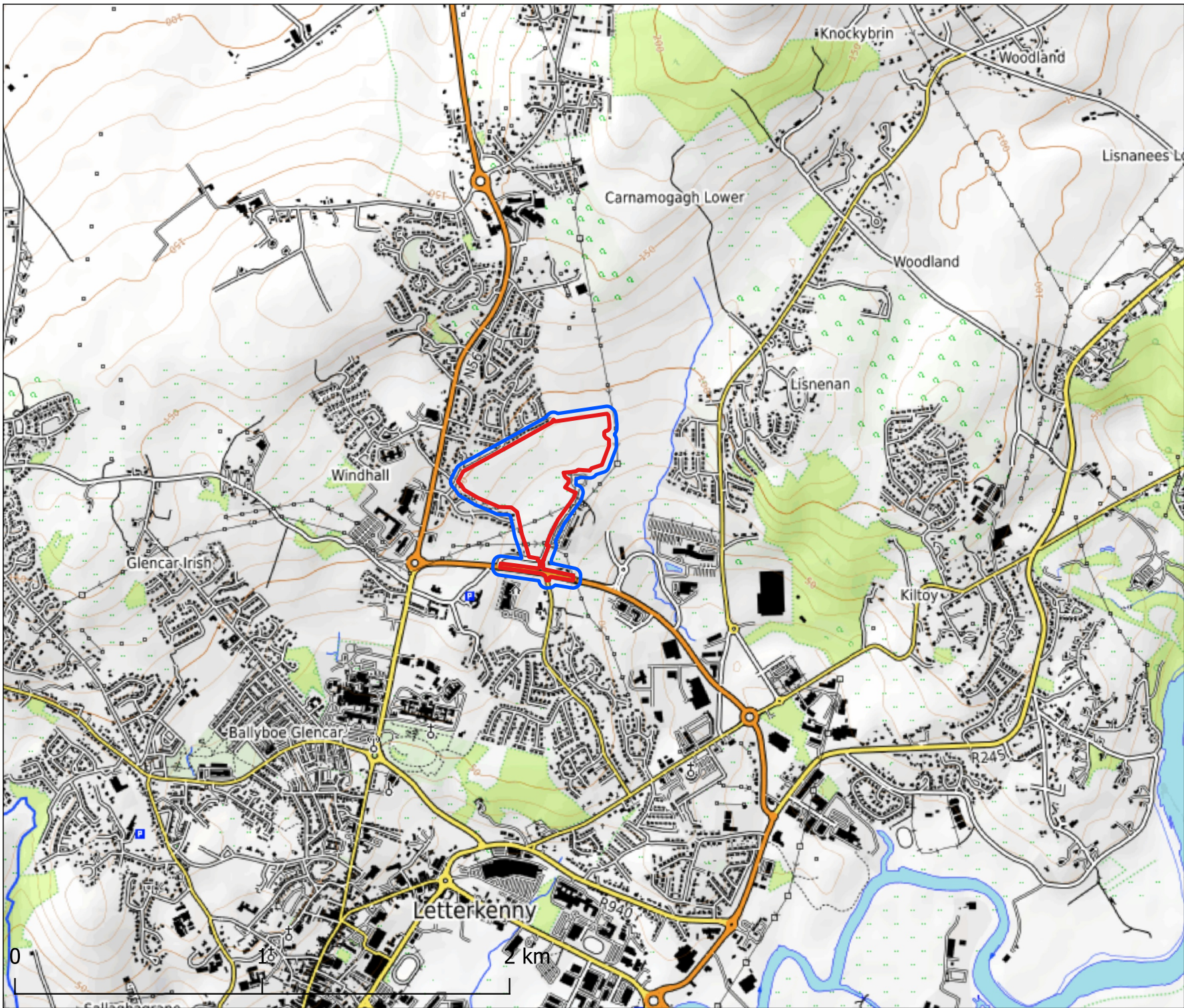
Project: Letterkenny Sports Hub

Title: Noise Sensitive Receptors (Extent C)

Figure No.

Project No.	Date	Revision
NI2553	04/04/2023	





Legend

- Site Boundary
- Ecological Study Area

**rps** Elmwood House T +44(0) 28 90 667914  
74 Boucher Road F +44(0) 28 90 668286  
Belfast W www.rpsgroup.com/ireland  
BT12 6RZ E ireland@rpsgroup.com

Client: Hamilton Architects

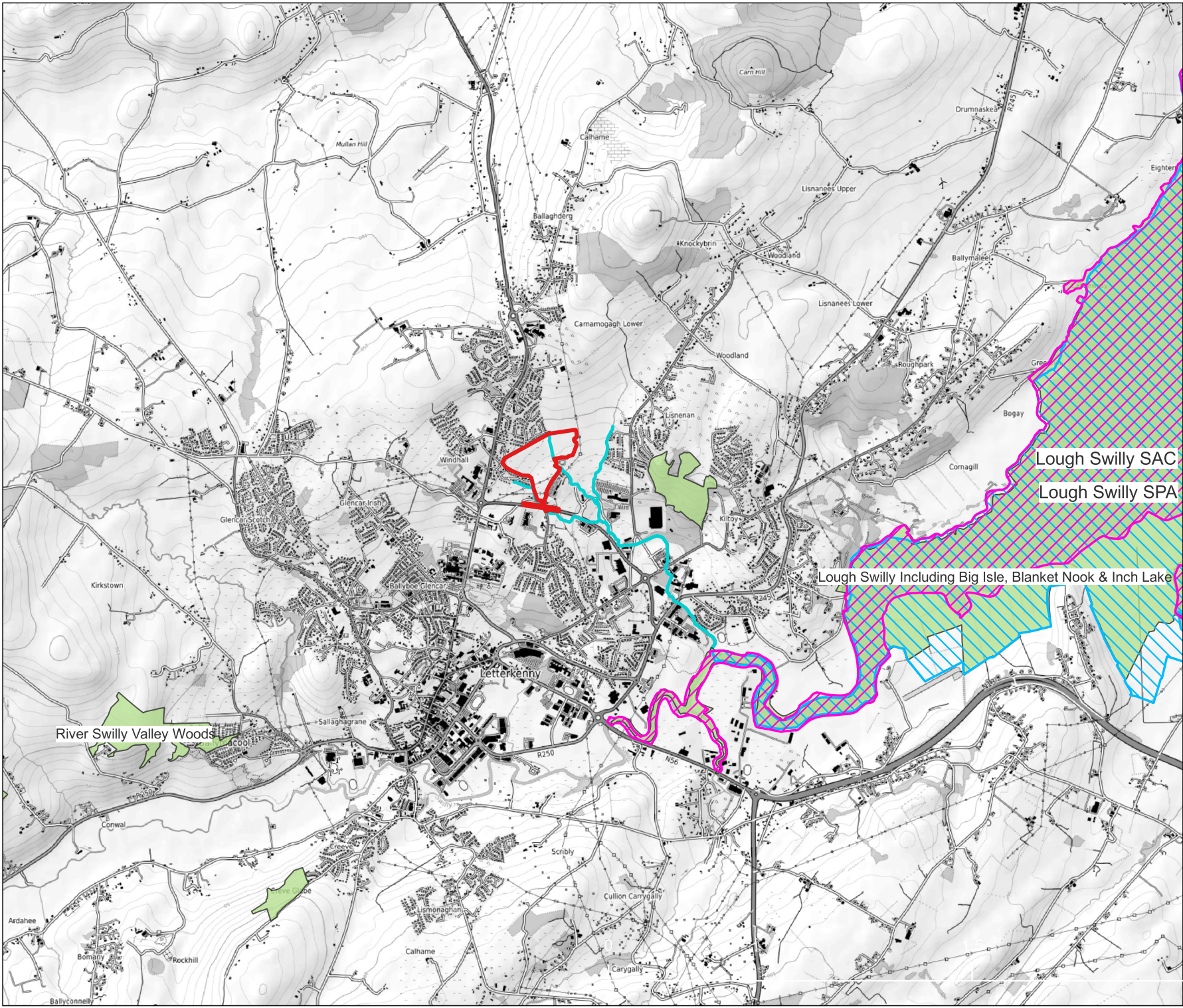
Project: Letterkenny Sports Hub

Title: Site Location

Figure No. 14.1

Project No.	Date	Revision
NI2553	07.06.2022	D01





Legend

- Site Boundary
- SAC
- SPA
- pNHA
- Surface Water Hydrological Connection

**rps** Elmwood House T +44(0) 28 90 667914  
74 Boucher Road F +44(0) 28 90 668286  
Belfast W www.rpsgroup.com/ireland  
BT12 6RZ E ireland@rpsgroup.com

Client: Hamilton Architects

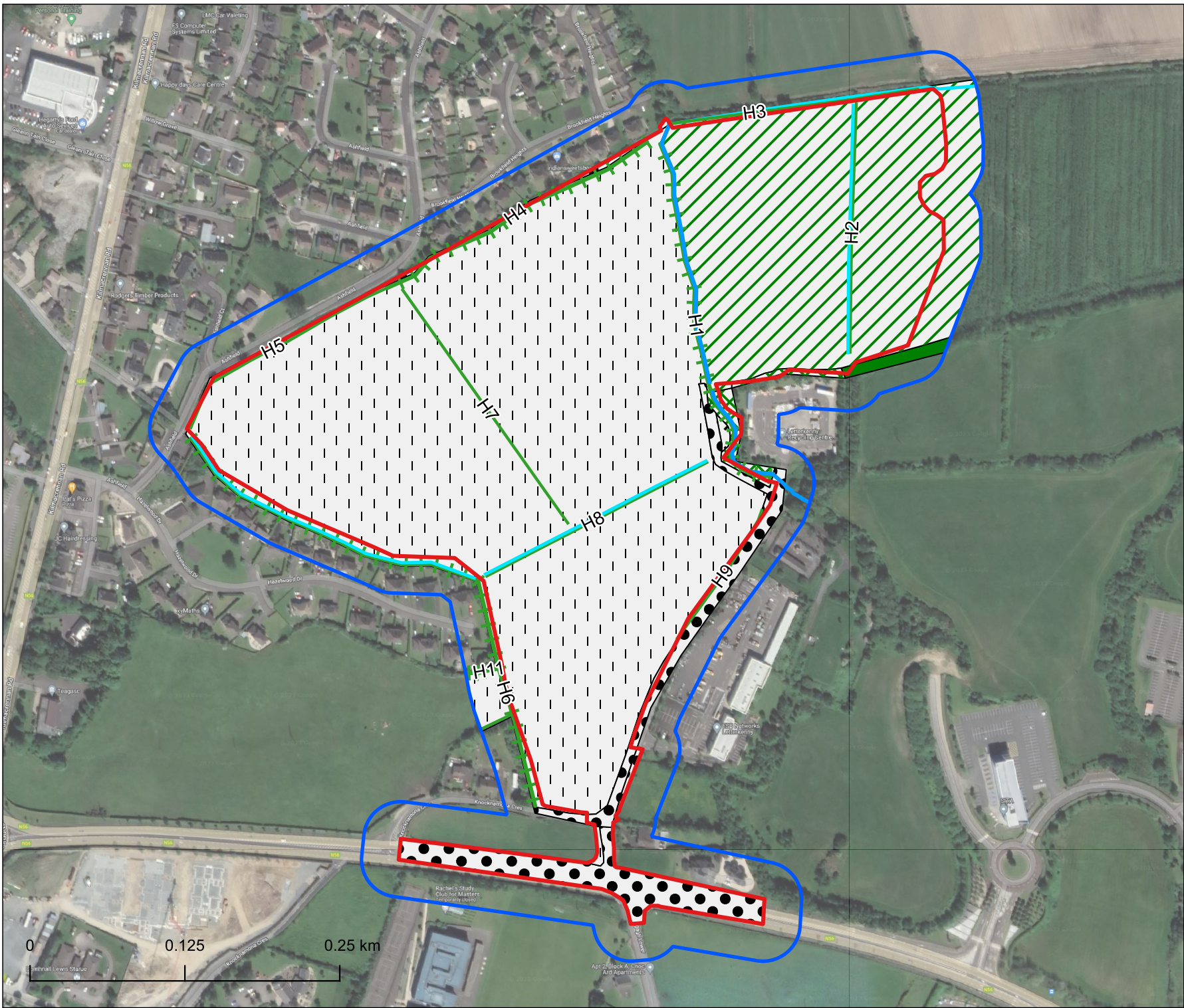
Project: ATU Regional Sports Hub

Title: Designated Sites

Figure No. 14.2

Project No.	Date	Revision
NI2553	07.06.2022	D01





### Legend

- Site Boundary
- Ecological Study Area
- Broadleaved Plantation Woodland
- Short Rotation Coppice
- Scrub
- Improved Grassland
- Recolonising Bare Ground
- Artificial Surfaces: Hardstanding
- Eroding/Upland River
- Intact Hedgerow
- + + Hedgerow with Trees
- Drainage Ditch

**rps** Elmwood House T +44(0) 28 90 667914  
 74 Boucher Road F +44(0) 28 90 668286  
 Belfast W www.rpsgroup.com/ireland  
 BT12 6RZ E ireland@rpsgroup.com

**Client:** Hamilton Architects

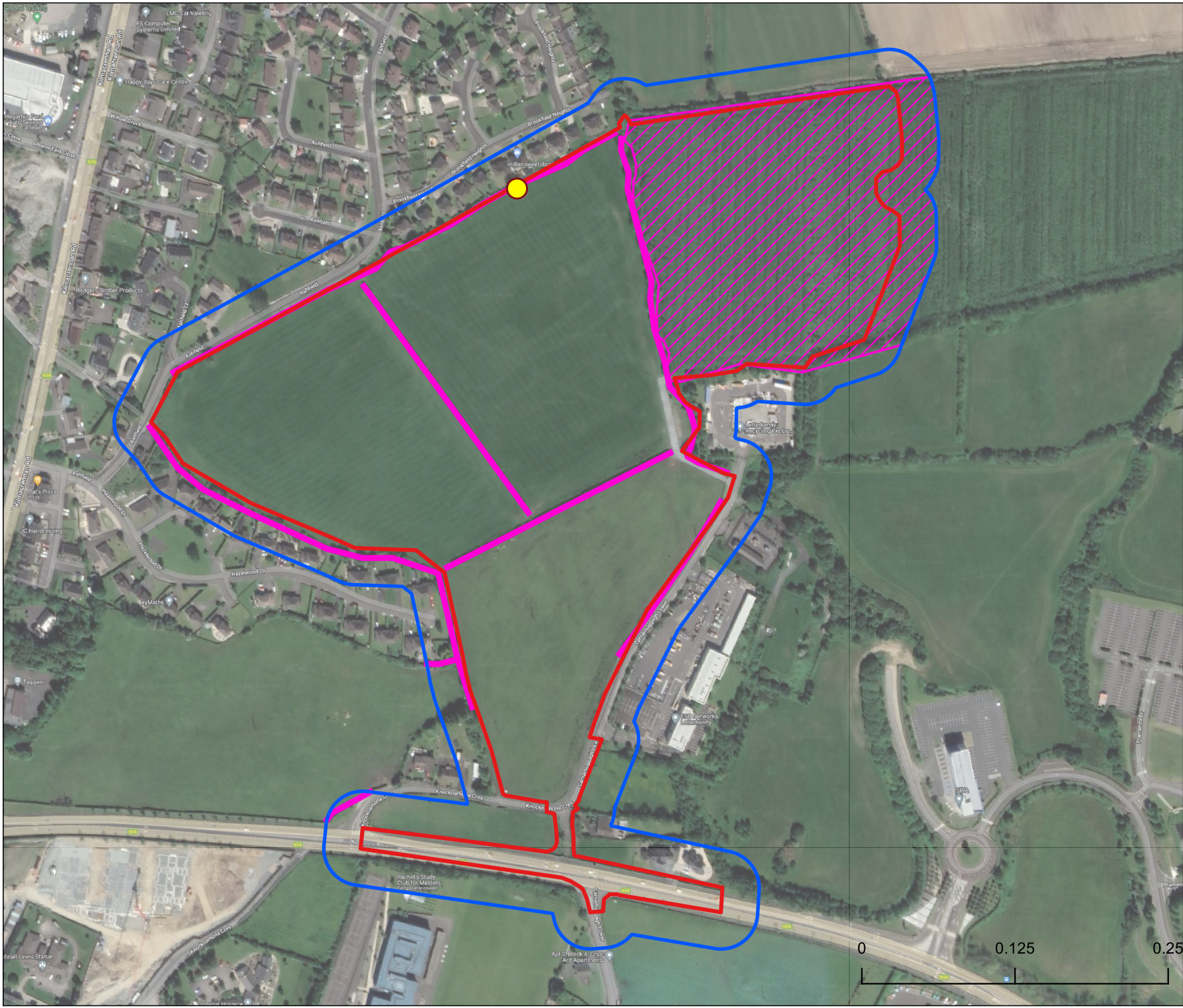
**Project:** ATU Regional Sports Hub

**Title:** Phase 1 Habitat Survey

**Figure No.** 14.3

Project No.	Date	Revision
NI2553	07.06.2022	D01





**Legend**

- Site Boundary
- Ecological Study Area
- ▨ Salmonberry (Scattered)
- Salmonberry (Within Hedgerows)
- Tree with Potential for Roosting Bats

**rps** Elmwood House T +44(0) 28 90 667914  
74 Boucher Road F +44(0) 28 90 668286  
Belfast W www.rpsgroup.com/ireland  
BT12 6RZ E ireland@rpsgroup.com

**Client:** Hamilton Architects

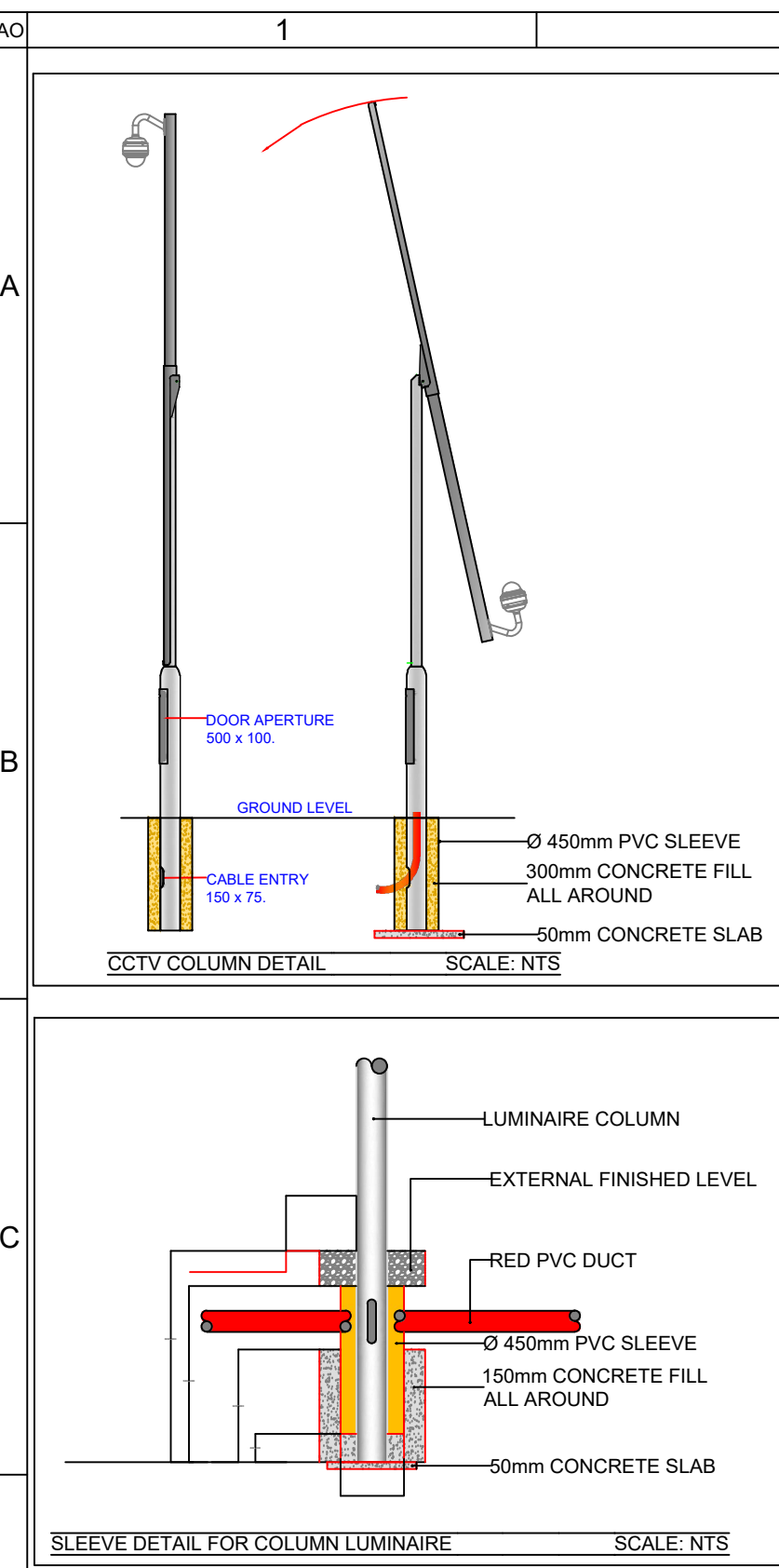
**Project:** ATU Regional Sports Hub

**Title:** Protected and Invasive Species

**Figure No. 14.4**

Project No.	Date	Revision
NI2553	07.06.2022	D01





- EXISTING SITE - 275,309M<sup>2</sup> / 27.5 HECTARES
- KEY:
- 1 1x 4G Synthetic Pitch (Pitch 1)
  - 2 1x Grass/Sand Competition Pitch (Pitch 2)
  - 3 2x Natural Grass Pitches with Cricket Crease (Pitch 3,4,5)
  - 4 4x Synthetic 5 Aside Soccer (Pitch 6,7,8,9)
  - 5 1x Hurling Wall
  - 7 1x Athletics Sprint Track
  - 8 Walking Track Loop with Bollard Lighting
  - 9 Outdoor Gym Equipment
  - 10 Playpark
  - 11 Pavilion Building
  - 12 Pavilion Building Air-Dome Annex
  - 13 Site Compound
  - 14 Biodiversity Garden
  - 15 Amphitheatre
  - 16 Community Garden
  - 17 Training Area
  - 18 Site access to be agreed with DCC

**SITE SERVICES LEGEND**

- EXISTING ESB DUCTING ROUTE
- PROPOSED ESB DUCTING ROUTE
- EXISTING EIR DUCTING
- PROPOSED EIR DUCTING
- PROPOSED LV DUCTING
- PROPOSED ELV DUCTING
- PROPOSED LV LIGHTING DUCTING
- PROPOSED SPARE DUCTING
- ELECTRICAL CABLE PROTECTION ACCESS BOX
- ELECTRICAL CABLE PIT (NTS)
- CABLE PROTECTION POLE BOX
- ACCESS JUNCTION
- MAIN LV SWITCHBOARD
- SUB-DISTRIBUTION BOARD / MINI PILLAR
- EXTERNAL IP DOME CAMERA IK10 IP66 ON COLUMN AS PER DETAIL
- EXTERNAL SPEAKER ARRAY

**EXTERNAL LIGHTING LEGEND**

- EX1 PHILIPS TOWNTUNE STREET LIGHT, 4000K, IP66, 24W, 3000lm
- EX2 PHILIPS CORELINE MALAGA STREET LIGHT OPTIC, 4000K, IP65, 56W, 6175lm
- EX3 PHILIPS CORELINE MALAGA STREET LIGHT OPTIC, 4000K, IP65, 83W, 9150lm
- EX4 TRAINING AREA FLOODLIGHT FITTING ARRANGEMENT, 2x695500lm, 2x510W - PHILIPS CLEARFLOOD LARGE BVP651
- EX-A PITCH FLOODLIGHT FITTINGS ARRANGEMENT - PHILIPS BVP528 (BY SPORTS LIGHTING SPECIALIST)

ALL LIGHTING TO BE CENTRALLY CONTROLLED VIA PHOTOCELL AND TIME CLOCK AT THE MAIN ENERGY CENTRE LOCATED ADJACENT THE PAVILION. FINAL STRATEGY TO BE DEVELOPED

**EXTERNAL LIGHTING NOTES**

THE EXTERNAL LIGHTING INSTALLATION SHALL BE CONTROLLED IN LINE WITH THE BELOW:

- EXTERNAL BOLLARD AND SECURITY LIGHTING MOUNTED CLOSE TO BUILDING PERIMETER SHALL LIGHT UP PATHWAYS AROUND THE PERIMETER OF THE BUILDING AND ENTRANCE DOORS TO THE BUILDING. LIGHTING ONLY REQUIRED DURING HOURS OF DARKNESS WHEN THE BUILDING IS IN USE.
- CAR PARK AND AVENUE LIGHTING - LIGHTING ONLY REQUIRED DURING HOURS OF DARKNESS WHEN THE BUILDING IS IN USE.

IN ADDITION TO THE NORMAL MANUAL LIGHTING CONTROLS PROVIDED, SEPARATE TIME CLOCK AND PHOTO CELL CONTROLS SHALL BE PROVIDED ON THE SECURITY LIGHTING AND CAR PARK ZONES. THESE SHALL BE INCORPORATED INTO THE DESIGN DEVELOPMENT. TIME CLOCK AND PHOTO CELL CONTROL SHALL BE PROVIDED ON THE EXTERNAL LIGHTING DISTRIBUTION BOARD.

-	PRELIMINARY ISSUE	26/05/23
-	PRELIMINARY ISSUE - UPDATED XREF	17/05/23
-	PRELIMINARY ISSUE	19/04/23
-	PRELIMINARY ISSUE	06/03/23
REV	DESCRIPTION	DATE

**PRELIMINARY**

THESE DRAWINGS ARE TO BE USED TO FACILITATE AN UNDERSTANDING OF THE SCOPE AND CONTENT OF THE WORKS AND FOR PRICING PURPOSES. THE DRAWINGS ARE SUBJECT TO THE CONTRACTORS DETAILED DESIGN. FOLLOWING THE DESIGN INTENT IN THE PERFORMANCE SPECIFICATIONS. THE DRAWINGS ARE NOT TO BE USED AS THE BASIS FOR CONSTRUCTION.



JOB DESCRIPTION: LYIT REGIONAL SPORTS-ACTIVITY HUB, LETTERKENNY, Co. DONEGAL

DWG TITLE: ELECTRICAL SITE SERVICES ELECTRICAL SERVICES INSTALLATION SHEET 1 OF 1

SCALE: 1:1000 DRAWN BY: [blank] VS: ENG: PMSC DATE: MAY 23

DRAWING No: 2955-PMC-ZZ-ZZ-DR-E-0001 REVISION: -



PLANT SCHEDULES

W1 MAIN WOODLAND MIX

% SPECIES	COMMON	SIZE	GROWN	TRANSPLANTS	DENSITY
C1	Quercus robur	40-60cm	BR	1 + 2 Branched	3750 Plants
P1	Pinus sylvestris	40-60cm	BR	1 + 1 Branched	Per Hectare
B1	Betula pendula	40-60cm	BR	1 + 1 Branched	Per Hectare
S1	Salix caprea	40-60cm	BR	1 + 1 Branched	Per Hectare
P1	Pinus sylvestris	40-60cm	BR	1 + 1 Branched	Per Hectare

W2 WOODLAND EDGE MIX

% SPECIES	COMMON	SIZE	GROWN	TRANSPLANTS	DENSITY
C1	Quercus robur	40-60cm	BR	1 + 1 Branched	3750 Plants
P1	Pinus sylvestris	40-60cm	BR	1 + 1 Branched	Per Hectare
B1	Betula pendula	40-60cm	BR	1 + 1 Branched	Per Hectare
S1	Salix caprea	40-60cm	BR	1 + 1 Branched	Per Hectare
P1	Pinus sylvestris	40-60cm	BR	1 + 1 Branched	Per Hectare

H1 HERDEGROW MIX

% SPECIES	COMMON	SIZE	GROWN	TRANSPLANTS	DENSITY
C1	Quercus robur	40-60cm	BR	1 + 1 Branched	3750 Plants
P1	Pinus sylvestris	40-60cm	BR	1 + 1 Branched	Per Hectare
B1	Betula pendula	40-60cm	BR	1 + 1 Branched	Per Hectare
S1	Salix caprea	40-60cm	BR	1 + 1 Branched	Per Hectare
P1	Pinus sylvestris	40-60cm	BR	1 + 1 Branched	Per Hectare

H2 CLIPPED HEDGES

% SPECIES	COMMON	SIZE	GROWN	TRANSPLANTS	DENSITY
C1	Quercus robur	40-60cm	BR	1 + 1 Branched	3750 Plants
P1	Pinus sylvestris	40-60cm	BR	1 + 1 Branched	Per Hectare
B1	Betula pendula	40-60cm	BR	1 + 1 Branched	Per Hectare
S1	Salix caprea	40-60cm	BR	1 + 1 Branched	Per Hectare
P1	Pinus sylvestris	40-60cm	BR	1 + 1 Branched	Per Hectare

AVENUE & FEATURE TREES

% SPECIES	COMMON	SIZE	GROWN	TRANSPLANTS	DENSITY
C1	Quercus robur	40-60cm	BR	1 + 1 Branched	3750 Plants
P1	Pinus sylvestris	40-60cm	BR	1 + 1 Branched	Per Hectare
B1	Betula pendula	40-60cm	BR	1 + 1 Branched	Per Hectare
S1	Salix caprea	40-60cm	BR	1 + 1 Branched	Per Hectare
P1	Pinus sylvestris	40-60cm	BR	1 + 1 Branched	Per Hectare

NORTHERN MEADOW MIXTURE

% SPECIES	COMMON	SIZE	GROWN	TRANSPLANTS	DENSITY
C1	Quercus robur	40-60cm	BR	1 + 1 Branched	3750 Plants
P1	Pinus sylvestris	40-60cm	BR	1 + 1 Branched	Per Hectare
B1	Betula pendula	40-60cm	BR	1 + 1 Branched	Per Hectare
S1	Salix caprea	40-60cm	BR	1 + 1 Branched	Per Hectare
P1	Pinus sylvestris	40-60cm	BR	1 + 1 Branched	Per Hectare

WETLAND MEADOW MIXTURE

% SPECIES	COMMON	SIZE	GROWN	TRANSPLANTS	DENSITY
C1	Quercus robur	40-60cm	BR	1 + 1 Branched	3750 Plants
P1	Pinus sylvestris	40-60cm	BR	1 + 1 Branched	Per Hectare
B1	Betula pendula	40-60cm	BR	1 + 1 Branched	Per Hectare
S1	Salix caprea	40-60cm	BR	1 + 1 Branched	Per Hectare
P1	Pinus sylvestris	40-60cm	BR	1 + 1 Branched	Per Hectare

SHRUB & GROUNDCOVER

% SPECIES	COMMON	SIZE	GROWN	TRANSPLANTS	DENSITY
C1	Quercus robur	40-60cm	BR	1 + 1 Branched	3750 Plants
P1	Pinus sylvestris	40-60cm	BR	1 + 1 Branched	Per Hectare
B1	Betula pendula	40-60cm	BR	1 + 1 Branched	Per Hectare
S1	Salix caprea	40-60cm	BR	1 + 1 Branched	Per Hectare
P1	Pinus sylvestris	40-60cm	BR	1 + 1 Branched	Per Hectare

WOODLAND PLANTING (W1)

% SPECIES	COMMON	SIZE	GROWN	TRANSPLANTS	DENSITY
C1	Quercus robur	40-60cm	BR	1 + 1 Branched	3750 Plants
P1	Pinus sylvestris	40-60cm	BR	1 + 1 Branched	Per Hectare
B1	Betula pendula	40-60cm	BR	1 + 1 Branched	Per Hectare
S1	Salix caprea	40-60cm	BR	1 + 1 Branched	Per Hectare
P1	Pinus sylvestris	40-60cm	BR	1 + 1 Branched	Per Hectare

WOODLAND PLANTING (W2)

% SPECIES	COMMON	SIZE	GROWN	TRANSPLANTS	DENSITY
C1	Quercus robur	40-60cm	BR	1 + 1 Branched	3750 Plants
P1	Pinus sylvestris	40-60cm	BR	1 + 1 Branched	Per Hectare
B1	Betula pendula	40-60cm	BR	1 + 1 Branched	Per Hectare
S1	Salix caprea	40-60cm	BR	1 + 1 Branched	Per Hectare
P1	Pinus sylvestris	40-60cm	BR	1 + 1 Branched	Per Hectare

LEGEND

% SPECIES	COMMON	SIZE	GROWN	TRANSPLANTS	DENSITY
C1	Quercus robur	40-60cm	BR	1 + 1 Branched	3750 Plants
P1	Pinus sylvestris	40-60cm	BR	1 + 1 Branched	Per Hectare
B1	Betula pendula	40-60cm	BR	1 + 1 Branched	Per Hectare
S1	Salix caprea	40-60cm	BR	1 + 1 Branched	Per Hectare
P1	Pinus sylvestris	40-60cm	BR	1 + 1 Branched	Per Hectare

Refer Drawing MDA-222-101



Refer Drawing MDA-222-102

